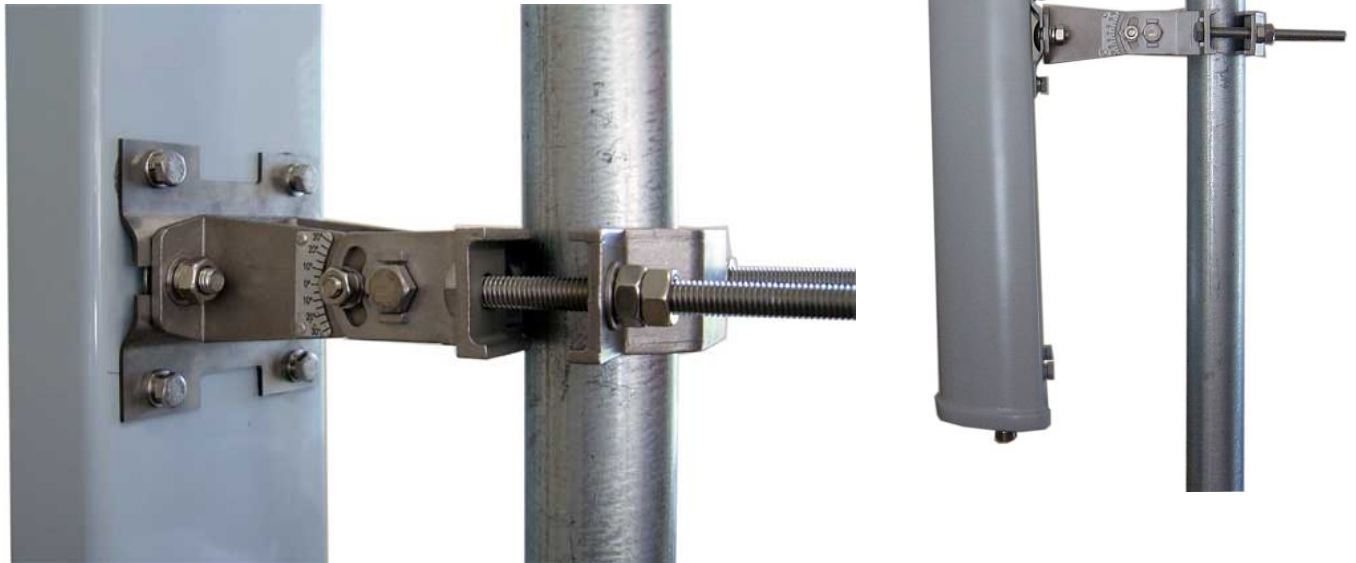


5.8GHz Wideband Sector Panel Instruction Sheet

Step 1: Attach bracket to antenna using 2 bolts. Attach Antenna/Bracket to pole. Set the rotation and then tighten the pole clamp bolts.

Step 2: Set the downtilt or uptilt using the angle indicator and then tighten the holding bolts.

Step 3: Attach the cable to the integrated N Connector and waterproof the connection using self annealing waterproofing **tape** followed by a layer of electrical tape. Always start at the cable spiraling up toward the connector so that the tape overlap act like shingles to shed water.



Bracket with angle indicator